

Referrals

If you have concerns regarding a child that you support and feel that this service may be of benefit, please contact us to obtain a referral form.

Alternatively, referral may be following discussions with other professionals e.g. with the Educational Psychologists, Speech and Language Therapists.

Following receipt of a completed referral form, a member of the outreach team will be in touch to discuss your support needs.

Contact
SLD Outreach Service
Midmere Learning Village
Midmere Avenue
Leads Road
HULL

01482 826508



Specialist support service
for children aged 3 –11
years with severe learning
difficulties and complex
needs including autism



Tel: 01482 826508

Our schools

Tweedkyes School is situated in North East Hull and serves the families of 150 children with severe and complex learning difficulties including autism and associated communication disorders. The school offers a personalised approach to teaching and learning through the use of a thematic curriculum ensuring pupils are engaged and that learning is fun.

Ofsted rated the school Outstanding in May 2013 and May 2016.

We were awarded Autism Accreditation in July 2014 and reaccredited in 2017, we received a commendation for our work with pupils with complex needs

Ganton School is situated in West Hull and serves the families of 165 children with severe and complex learning difficulties and disabilities. Many have autism and associated communication disorders. The school offers a personalised approach to teaching and learning and uses a creative curriculum to ensure learning is always fun.

Ofsted rated the school outstanding in January 2018.



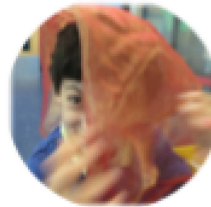
How can we help?

Our service is aimed at children aged 3- 11 years with severe learning difficulties with complex needs including autism.

We provide a package of support involving initial assessment of need, followed by a plan for meeting the training needs of the school or setting and interventions for the child.

This will include provision of resources if appropriate, a period of support visits by a specialist teaching assistant to provide modelling and coaching in your setting to help implement the programme .

Staff visits to one of the special schools to see interventions in place will also be available if appropriate.



What do we offer?

- Initial Assessment
- Identification and delivery of staff training
- An intervention plan for the child
- Support with planning and assessment
- Resources
- Support visits to promote modelling and coaching within your setting
- Attendance of reviews and written reports
- Closely liaison with other professionals and parents

