



**Northcott
School**

Outreach Service

Supporting the inclusion of pupils with Autistic Spectrum Disorder in mainstream Primary and Secondary settings

outreach@northcottschool.org.uk

Who are we.....

Teachers



Catherine Wittey



Hannah Gibson-Matthews



Chloe Lawrence

Lead Teacher



Jenny Clark

Outreach support workers

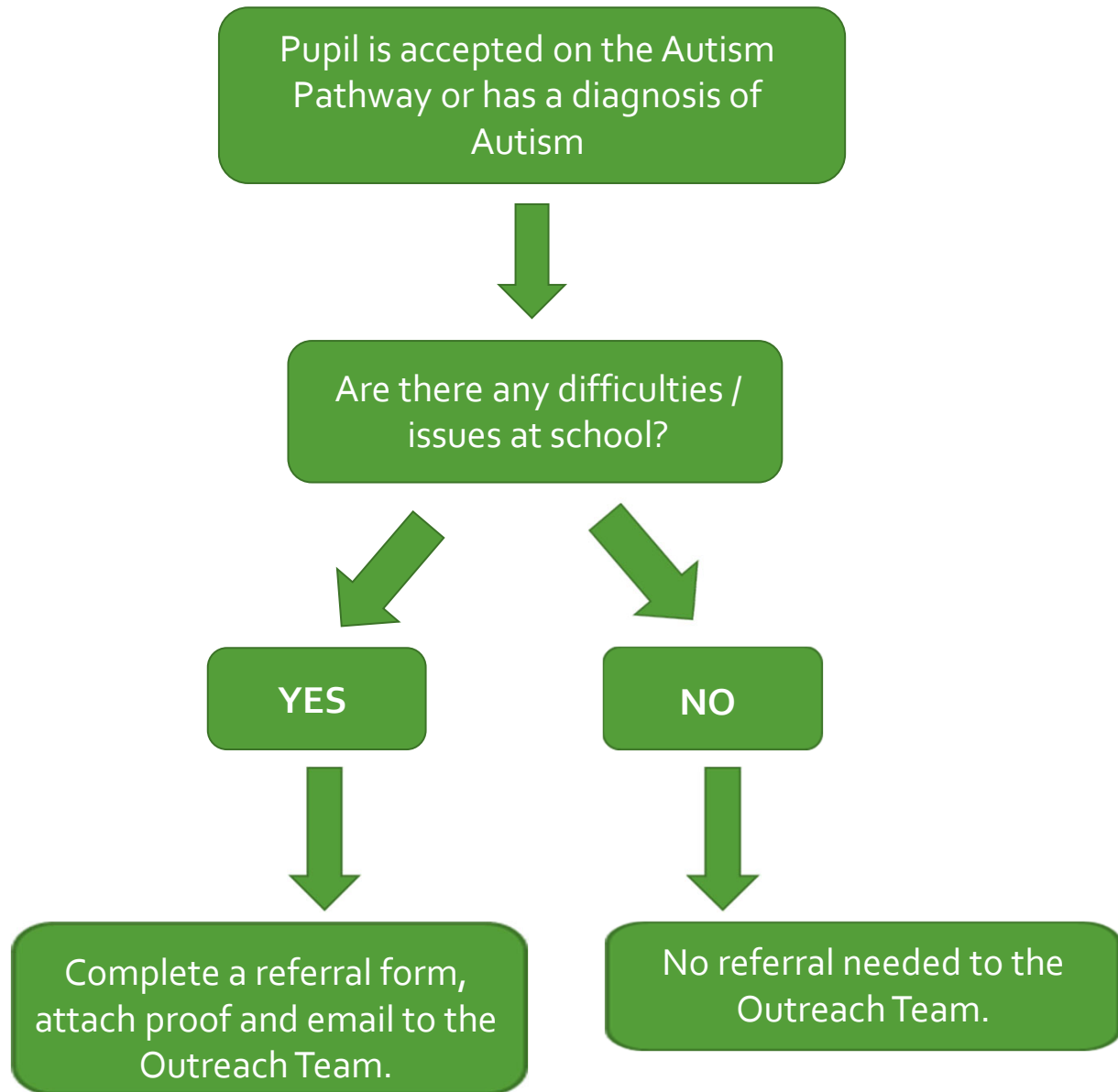
Sarah Penrose



Hannah Peterson



Our referral process:



The referral form:



Northcott Autistic Spectrum Disorder Outreach Service

Referral Form 2023

NAME		GENDER	
DATE OF BIRTH		SEX	

HOME ADDRESS	
Tel. No.	
PARENT/CARERS NAMES	

SCHOOL	
TEL. NO.	
HEAD	
SENCO	
EDUCATIONAL PSYCHOLOGIST	

Involvement of Other Agencies

AGENCY	CONTACT PERSON

DHCP YES NO

PLEASE ENCLOSE DHCP (IF APPLICABLE)

DHCP ATTACHED

Diagnosis

Has a diagnosis of ASD / Asperger?

Has been accepted on Autism Pathway

Referral to Neurological Services (Autism) made by / diagnosis from Neurological Services (Autism) made by:

NAME	
POSITION	
DATE	

Please note we can only accept referrals if one of these boxes is checked and the information above is complete and correct. From 4.01.22 you must provide evidence of the above alongside this referral form. Without this evidence the referral will not be accepted.

Referral to the Northcott Outreach Service (TO BE COMPLETED BY THE SCHOOL)

Main areas of difficulty:

--

Reason for referral:

--

PARENTAL PERMISSION:

I give my permission for members of the Northcott Autistic Spectrum Disorder Outreach Service to work with my child in school, to discuss his/her educational needs with relevant staff, and to access appropriate school records. I understand that the Northcott Outreach teachers may need to share information relating to my child with other statutory agencies, e.g. Speech & Language Therapists, Educational Psychologists. The Outreach service securely store information in line with the schools GDPR policy. A copy of this policy can be obtained from Vicky Carmichael at Northcott School, Dulverton Close, BUL HU7 4EL.

PARENT'S SIGNATURE:
DATE:
HEADTEACHER'S SIGNATURE:
DATE:

Completed form to be emailed with proof to: outreach@northcottschool.org.uk

What happens after a referral is received:

- The outreach teacher assigned to the school will arrange an initial observation
- After this the support needed will be identified. Any support, resources etc needed will be sent to the school
- The pupil will then be discussed twice yearly in planning meetings with the SENCO and outreach teacher
- Advice and support will continue on a needs led basis
- If the pupil is referred by the Primary setting this support will continue at Secondary school. We also support with transition from Primary to Secondary



Who our service supports:

- We are a school support service
- We support pupils from pre-school to post-16 who are on the Autism Pathway or who have a diagnosis of Autism and are in a mainstream school setting
- We are a needs led service that offers support to all mainstream settings across Hull



What we do:



- We work in an advisory role within schools, supporting staff in developing their understanding of ASD
- Our aim is to empower staff by: sharing practical advice and training; sharing tools and strategies to enable pupils to access learning and social opportunities; and promoting a holistic approach to working with students.
- Our support is tailored to the individual pupil and setting and is continually changing and developing
- Pupils are not discharged from our service until they leave education
- We have a free virtual training offer plus we offer face to face training that can be tailored to settings

Some examples
of the support
we provide:



Any questions?



**Northcott
School**